

Fitting instructions

SABI-Safety Approved Body Installation



A person is shown from the back, leaning into the cargo area of a vehicle. They are working on a wall panel that has a grid of square holes. The person is wearing a dark t-shirt and light-colored trousers. The vehicle's interior is visible, including the side panel and the floor.

Introduction

These mounting instructions show how a racking system should be installed in the vehicle. The modular racking system can be configured in a variety of ways, but these instructions show a common configuration. These mounting instructions must be adhered to regardless of the type of racking system, but positioning of angle brackets must be adapted to the specific racking system and the vehicle.

Preparation

Unpack; check the number and type of products supplied.

Preliminary assembly

Read the accompanying mounting instructions for the product in question. Assemble as much as possible outside of the vehicle – it is important that this is done on a flat surface.

Vehicle lining

If protective lining is to be fitted in the cargo space, this should be done before the racking system is lifted into the vehicle. But mark where the vehicle's structural members are so that you can position the angle brackets there when installing the racking system.

Installing in the vehicle

Lift the racking system into the vehicle and adjust into position. The racking system should then be mounted on the walls and floor using the fastening components indicated. Bolts must be used for attachment where possible, otherwise use rivets. With floor mounting a number of panels, spare wheels etc. often need to be removed to allow access for bolted mounting. Holes drilled into the vehicle's bodywork need rust protection, and metal swarf must be cleaned up to reduce the risk of corrosion to the vehicle's bodywork.

When mounting drawer sections, always start by positioning the stand for the drawer section at a suitable location in the vehicle, and then attaching it using through-bolts or pop rivets. Then build upwards in accordance with the mounting instructions for the accompanying product in question.

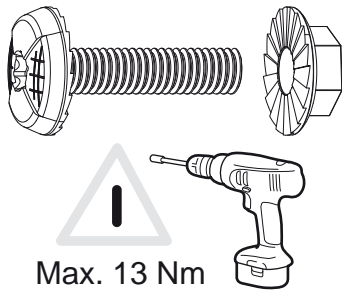
Mount the fixing plate for the racking, before you fastens the floor above the drawer section.

When mounting an extendable frame always position it in such a way that it can be attached using through-bolts in the floor of the vehicle. Look out for electrical wiring, fuel pipes, spare wheels, etc., under the floor of the vehicle before you start drilling.

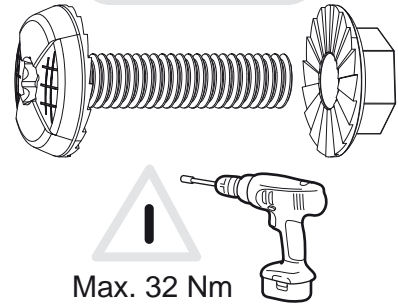
IMPORTANT!

Before holes are drilled in the floor and bodywork find out what is under the floor and behind pillars, e.g. electrical wiring, brake or fuel lines, fuel tank, chassis, etc!

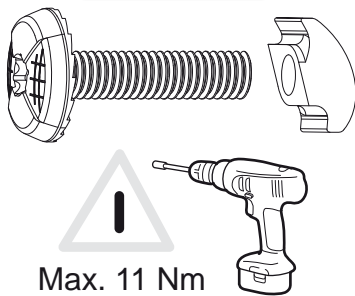
M6



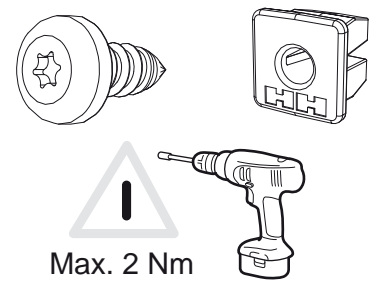
M8



M6

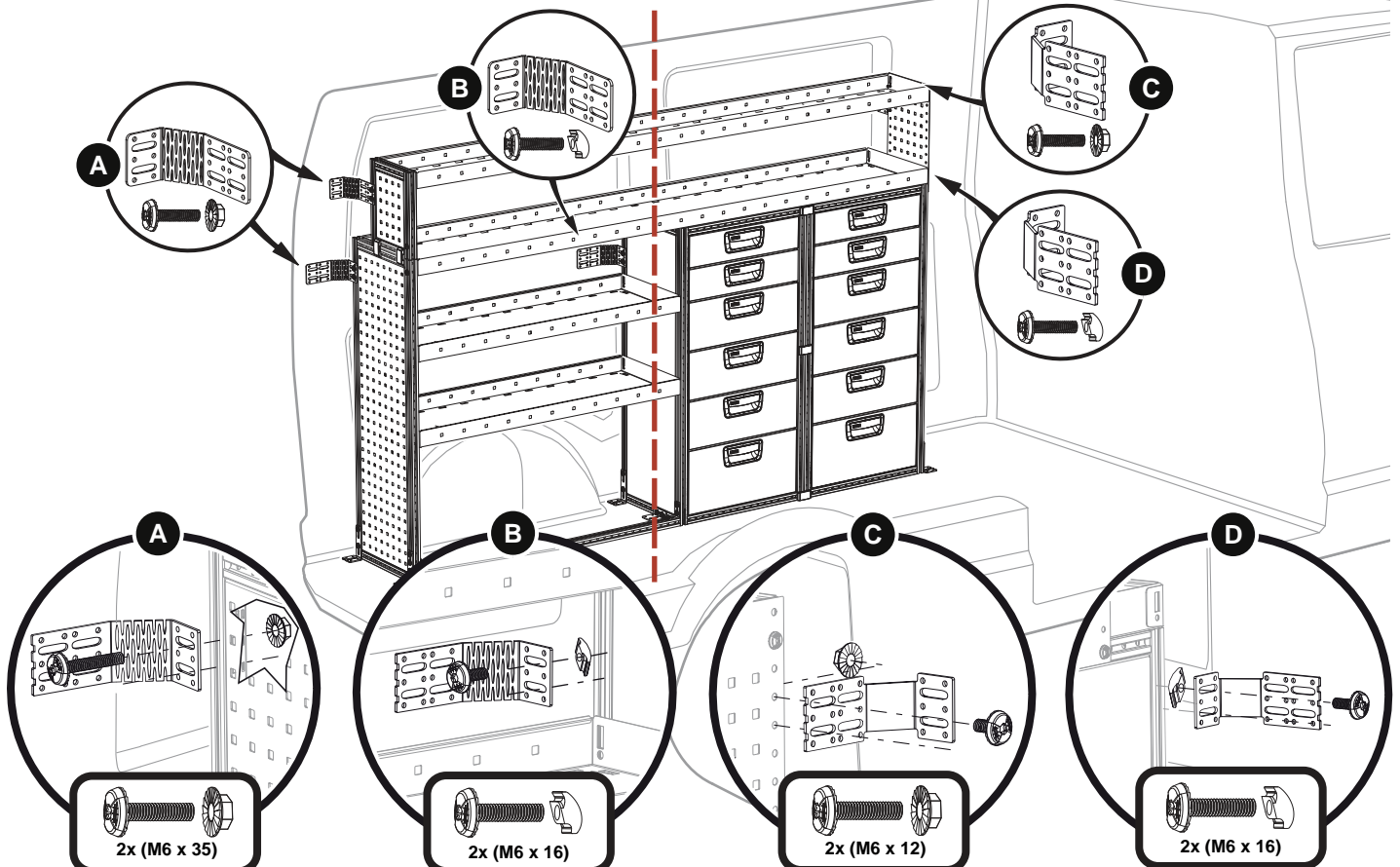


5x12

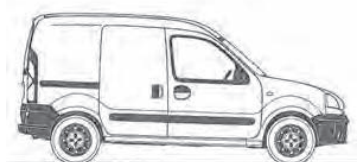


Rear end of racking, use
shock absorbing brackets
same amount as in front.

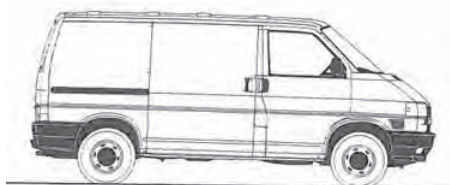
Front end of racking, use
regular brackets, same amount as
in rear.



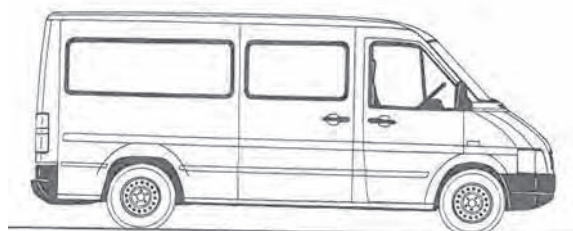
Size of vehicle / recommended number of brackets for fixation of kit.



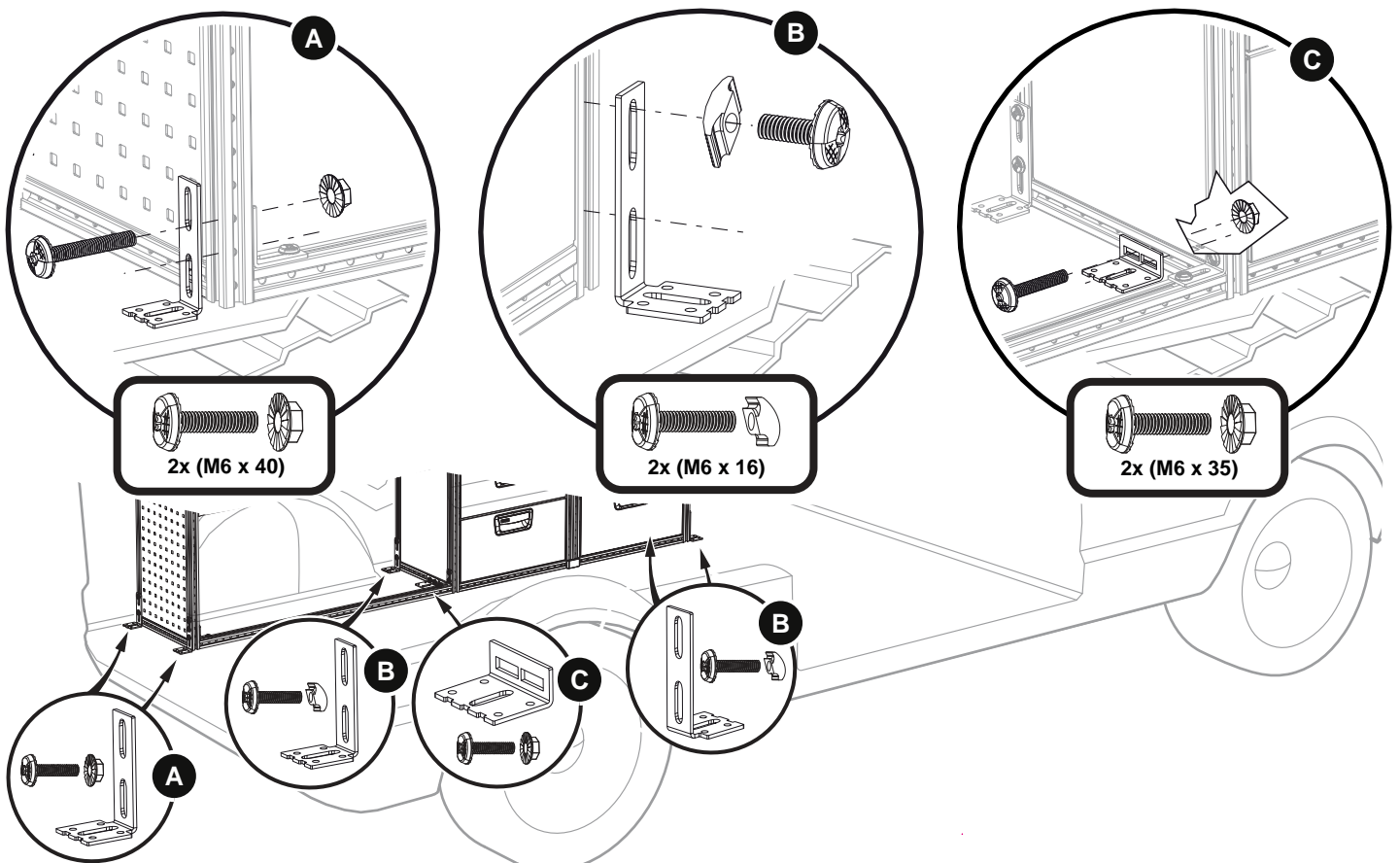
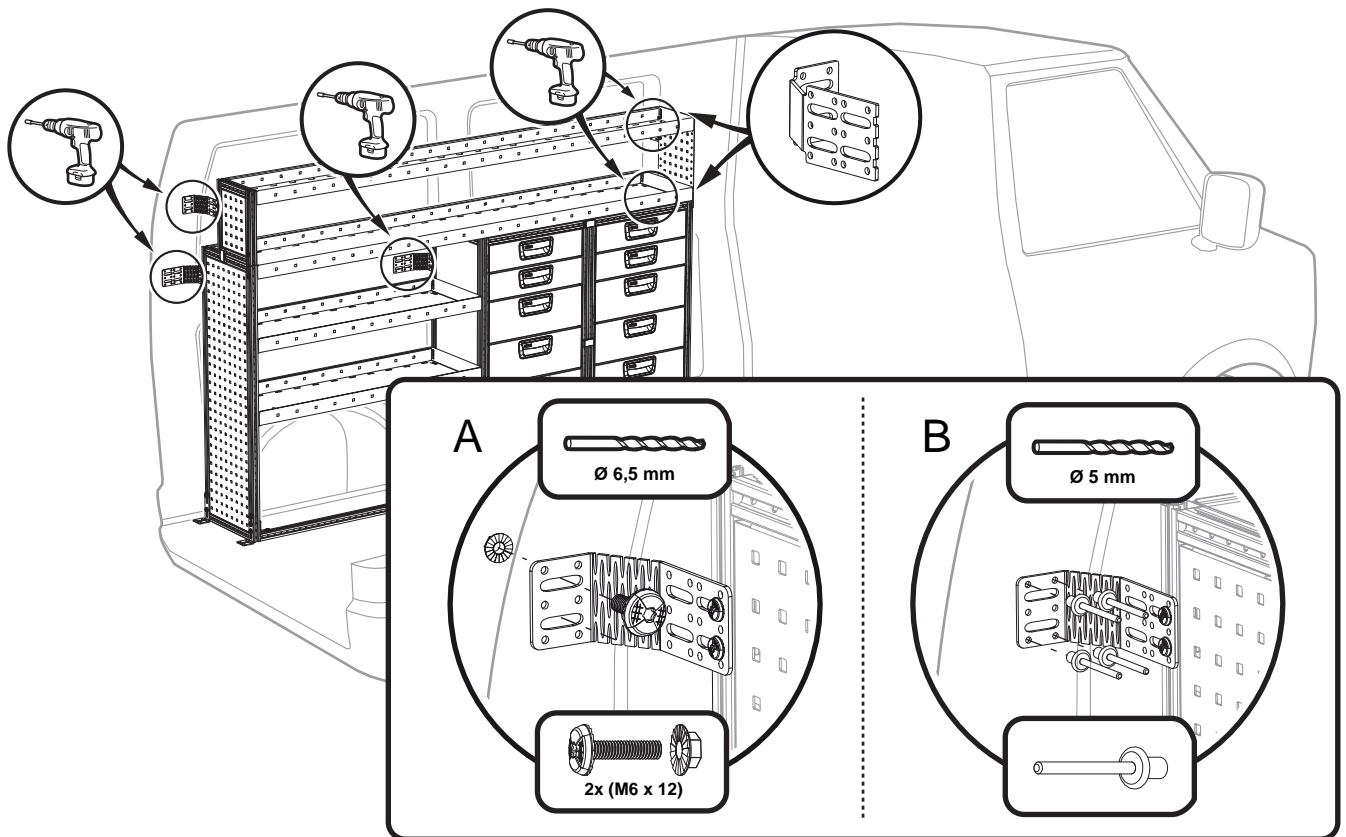
Floor: 4-6 pcs
 Vehicle body side without door: 5 pcs
 Vehicle body side with door: 4 pcs

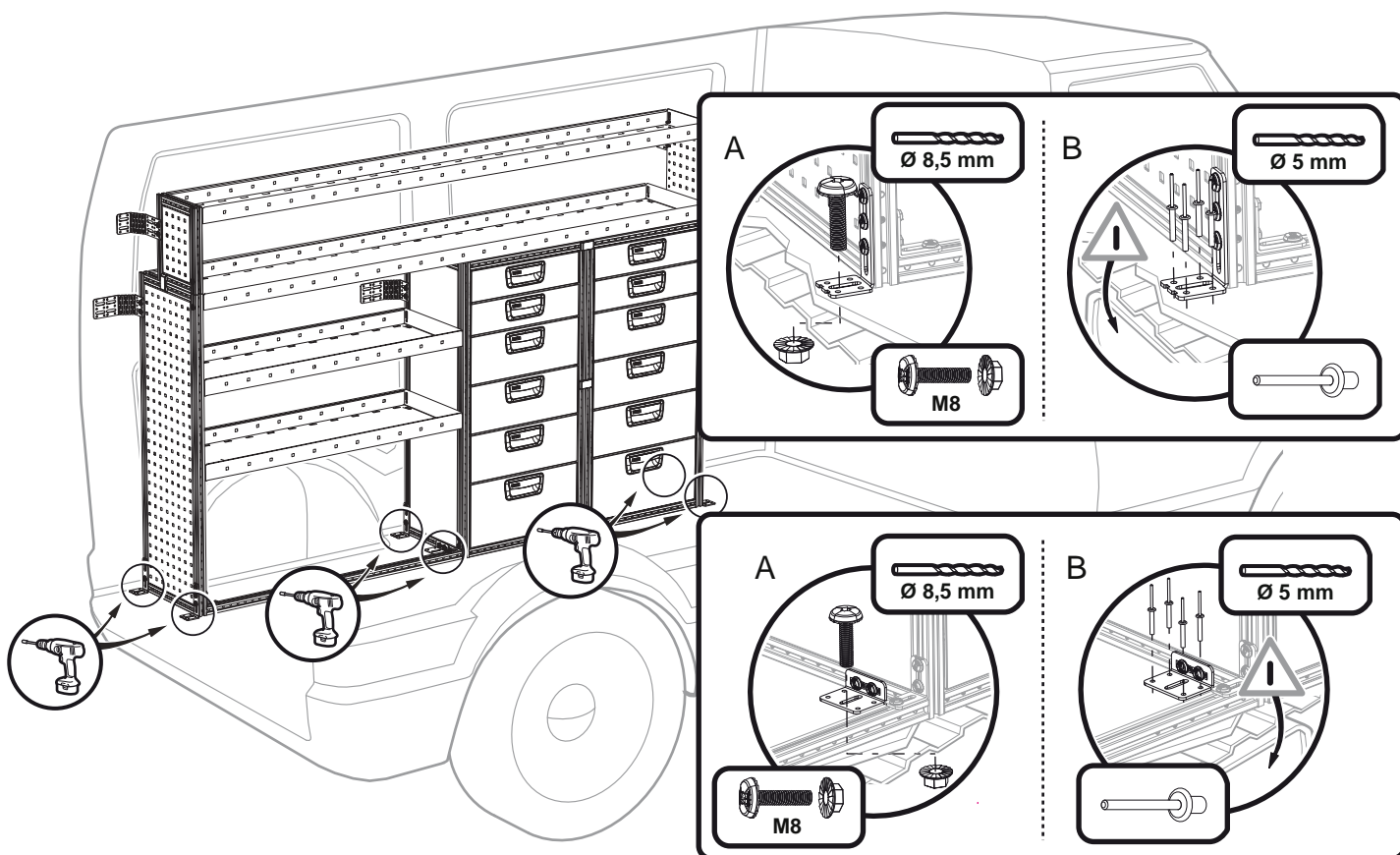


Floor: 4-6 pcs
 Vehicle body side without door: 7 pcs
 Vehicle body side with door:
 Depht 324 mm of kit, 4 pcs
 Depht 486 mm of kit, 6 pcs

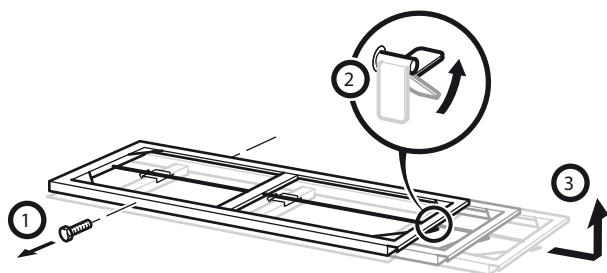


Floor: 6-8 pcs
 Vehicle body side without door: 9 pcs
 Vehicle body side with door: 7 pcs

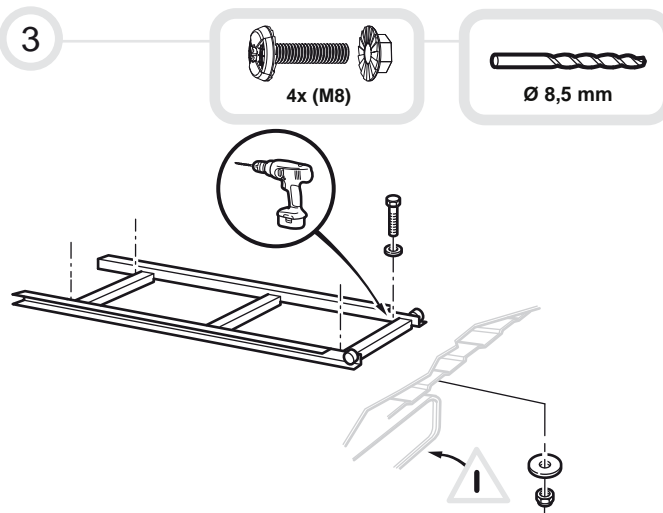




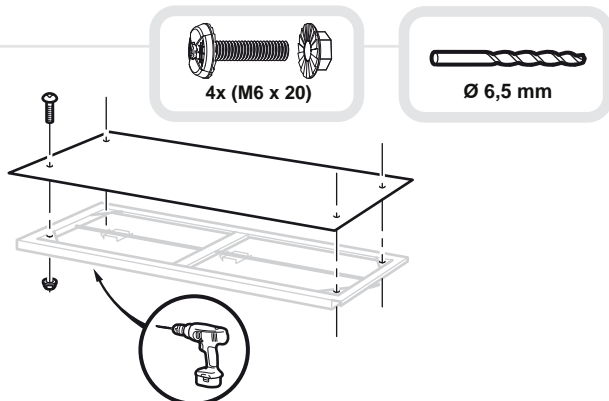
1



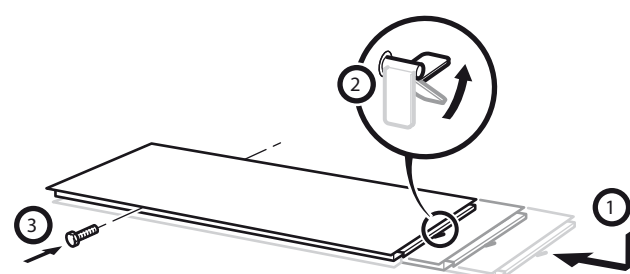
3

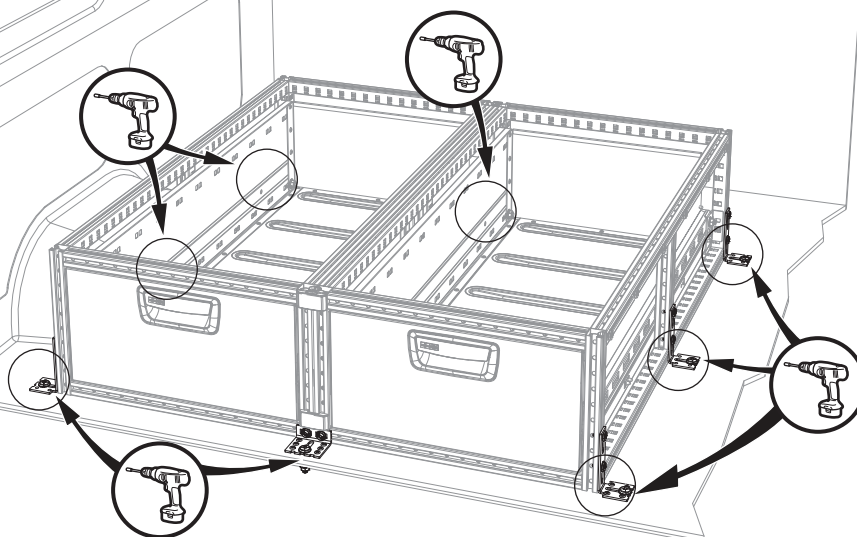
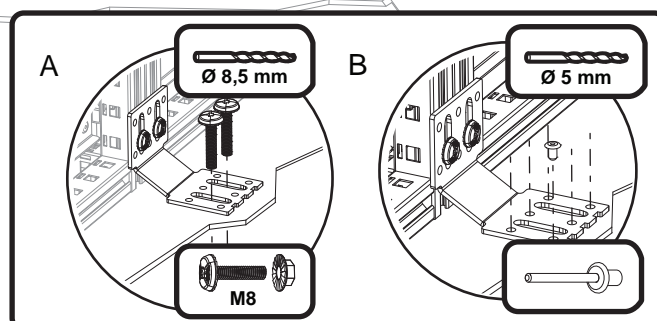
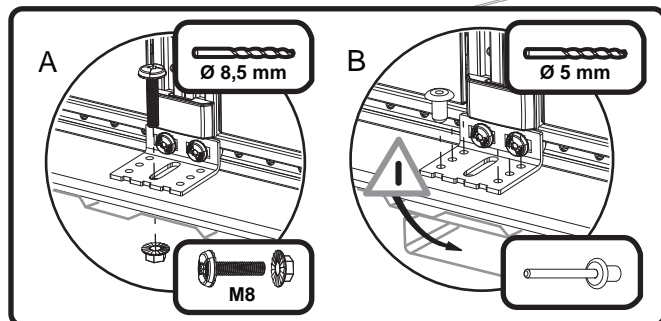
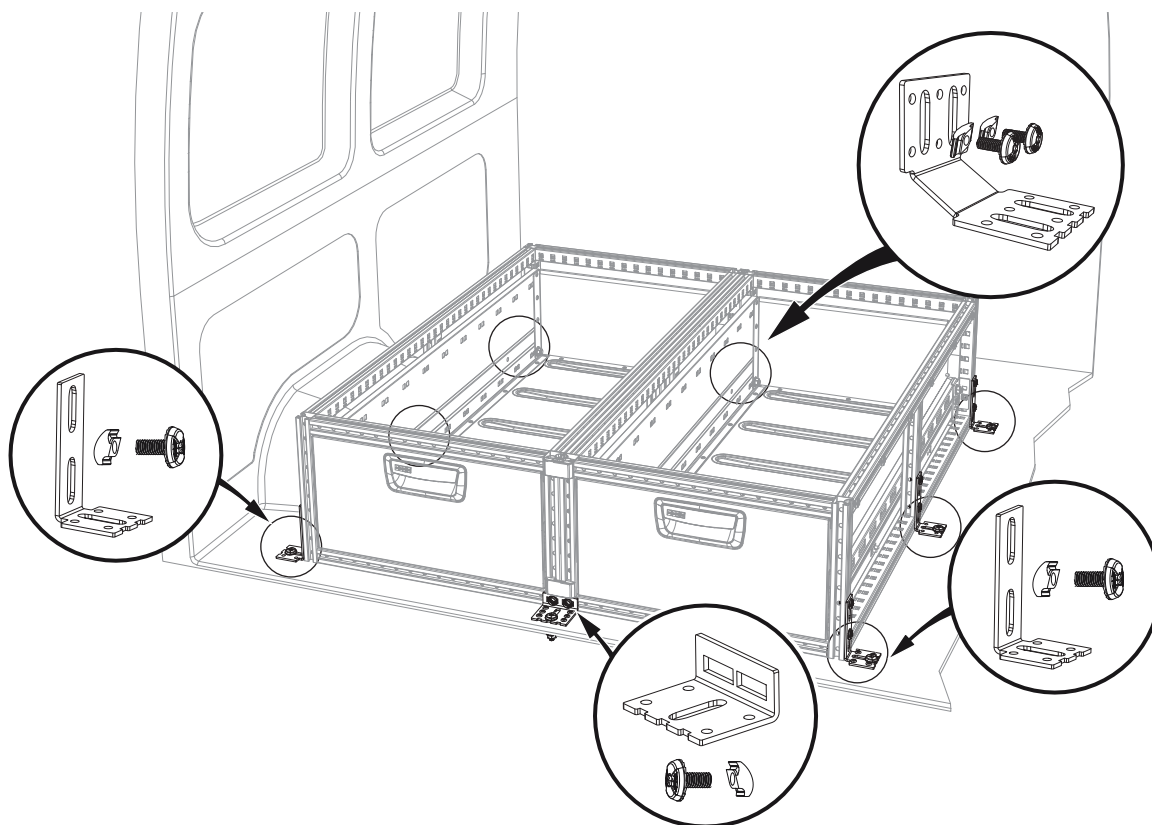


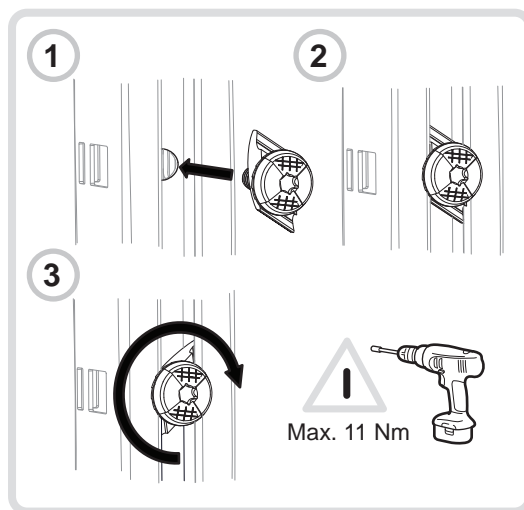
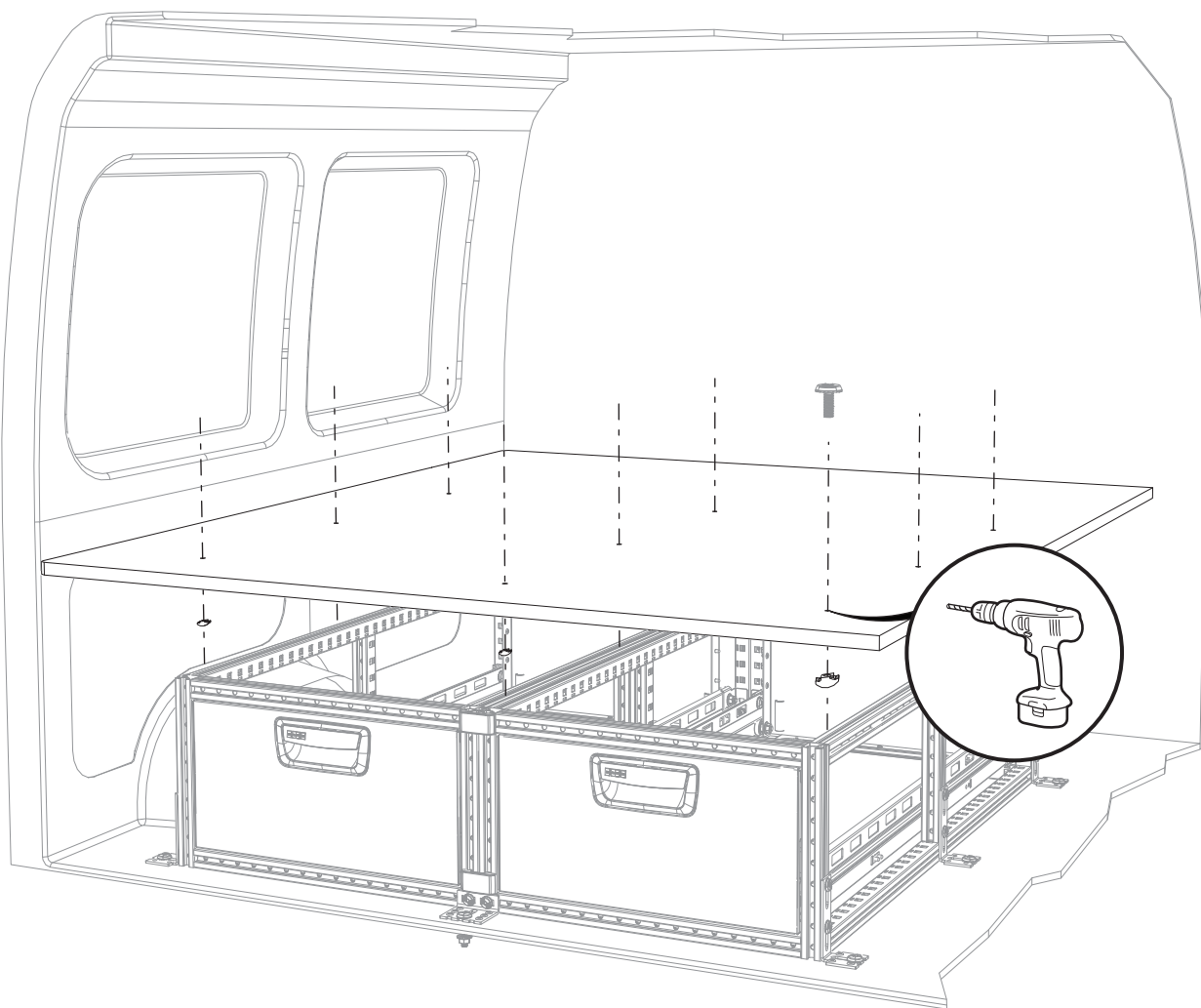
2



4







Ø 6,5 mm



M6 x 35